



New Plug-in Microinverters & Storage

HiBattery AC | HiFlow | HiFlow Pro



Sep. 2025



Chosen by
1 million balconies,
and ready for more.





Hoymiles Plug-in Product Family

| | | | |
|----------------------------|-----------------------|-------------------------------|----------------------|
| Smart Meter | / | / | Hoymiles Smart Meter |
| Stackable Battery | / | / | HiBattery Stack |
| Hybrid Micro Storage | / | / | HiBattery X |
| AC Coupled Micro Storage | MS-A2 | HiBattery 1920 AC | TBD |
| Microinverter for 4 panels | HMS-1600 +DTU Wlite S | HiFlow 1600 Pro | TBD |
| Microinverter for 2 panels | HMS-800 W | HiFlow 800 Hi Flow 800 Pro | TBD |
| | 2024 | 2025 | 2026 |

| | Customer Needs | Hoymiles Products |
|---------------------------------|---|-----------------------------|
| For new balcony solar customers | Only PV | HiFlow/HiFlow Pro |
| | PV+Storage | HiFlow/Pro+HiBattery AC |
| | | HiBattery x (+smart meter) |
| For existing balcony PV users | Looking for storage | HiBattery AC (+smart meter) |
| | Looking for additional storage capacity | Another HiBattery AC |
| | | HiBattery Stack |



Plug-in Micro Storage





HiBattery 1920 AC

AC Coupled Micro Storage | Plug & Play | 1.92 kWh



Annual Savings

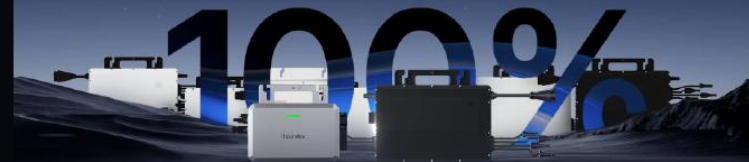
€350

1.92-11.52kWh

Expandable Capacity



Compatible
with all inverters



Plug In **Any Socket**
& **Anywhere**



AI TOU



Zero Export
with Smart Meters



96.5%

Bidirectional Conversion

86%

Round-Trip Efficiency



Automotive-grade
LFP batteries

6000+



10-Year
Warranty





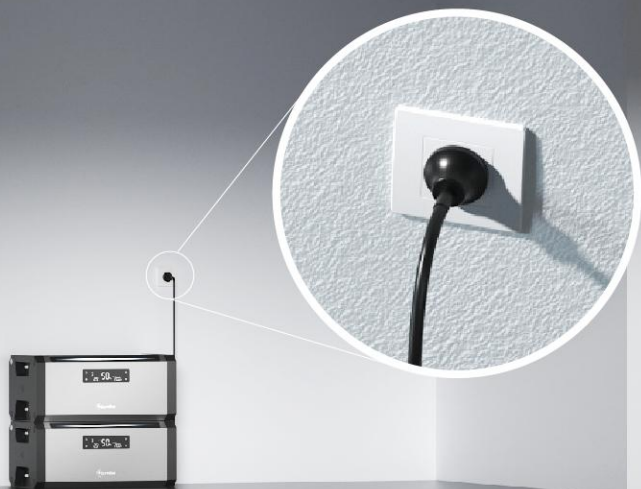
AC Coupled: **No Wiring Needed**

(with smart meter)

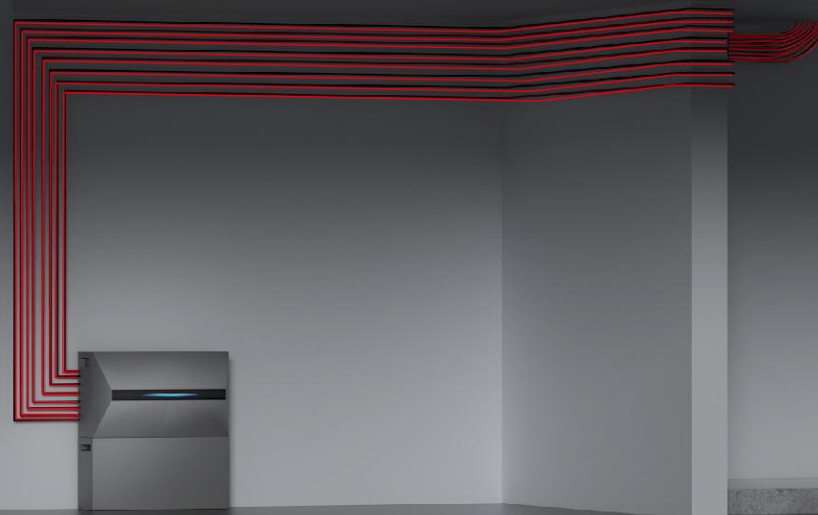
For **existing microinverter users**, HiBattery AC connects directly—no extra cabling or complex setup required. Instantly upgrade to storage for a more efficient and intelligent solar system.

AC Coupled: **No Wiring Needed**

(with smart meter)



No wiring
AC Coupled Solution



Extra wiring hassle
Hybrid Solution



AC Coupled: **Plug in Any Socket**

(with smart meter)



Two Installation Modes



Flexible Installation
(with smart meter)



Direction Installation

HiBattery AC adopts an AC-coupled solution with advanced bidirectional charging and discharging technology. It offers two easy installation options—plug into any standard home socket or connect directly to a microinverter—making it ideal for beginners or upgrading existing solar systems with minimal effort.

Two Working Modes



Self-consumption Mode

By integrating with smart meters, the system dynamically adjusts charging and discharging to match your real-time solar production and consumption. That means you use more of your own solar energy, rely less on the grid, and save more money.



Time of Use Mode

It also supports Time-of-Use (TOU) mode that allows you to customize charge and discharge schedules based on electricity rates, minimizing your energy costs and maximizing your economic returns.



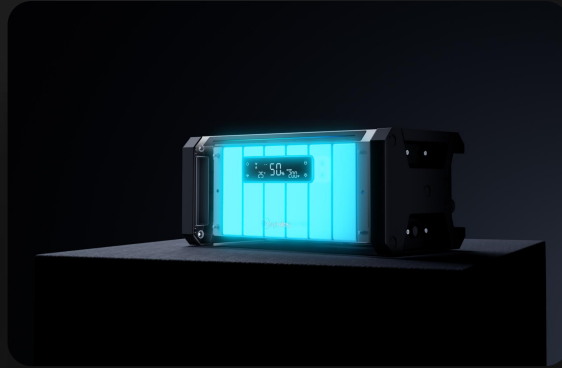
Top Class Efficiency



Highest bidirectional DC/AC efficiency of 96.5% and AC round-trip efficiency of 86% unmatched in the industry, all for the best use of every kilowatt-hour.

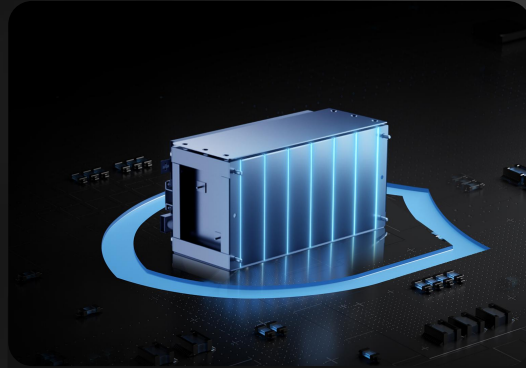


Industrial-Grade **Reliability**



Automotive - grade Cells

Automotive-grade prismatic LiFePO₄ cells deliver over 6,000 charge-discharge cycles. The rigid, aluminum casing enhances structural strength and thermal dissipation, boosting safety and longevity. Compact and stackable cell design also simplifies manufacturing and reduces costs.



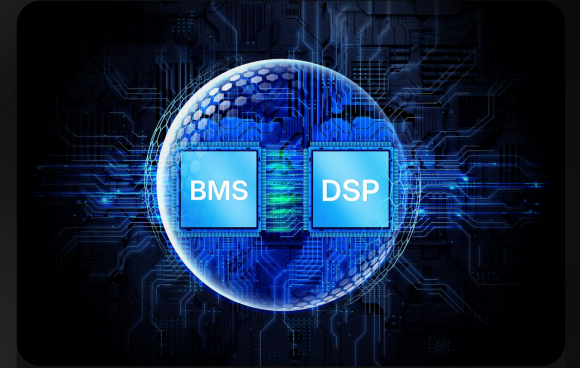
48 Layers of BMS Protection

Hoymiles Battery Management System features 48 layers of safety protection including overvoltage, undervoltage, overcurrent, short circuit, overtemperature, overcharge, and overdischarge, continuously monitoring battery status to ensure safe and stable operation.



Reliability Tested

Tested under extreme conditions including high heat, humidity, and rapid thermal shifts. Put through 10+ reliability tests like aging, vibration, and impact. All for lasting safety, stability, and durability.



Dual MCU Protection

A dual MCU-based system design is used to enhance safety and stability. The main MCU handles normal operation, while the secondary MCU independently monitors voltage, current, and temperature, and quickly cuts off power in case of a main MCU fault.

Ultimate Safety

Internal Fire Extinguisher

Eliminate Fire Risks



Pressure Relief Valve

Automatically balances pressure to prevent dangerous buildup



Cybersecurity

RED EN 18031
Certificated



IP66

Waterproof & Dustproof



-20°C

Self-heating. Winter-proof



< 17dB operation

Quieter than a whisper



Effortless **Simplicity**



Quick connection
via Bluetooth and
Wi-Fi, ready to go in
**less than 60
seconds.**



Portable power station
for outdoor activities.
Capable of forming an
independent **off-grid**
system with
microinverters and panels.



Check everything
about the operation
status through the
LED screen and the
indicator **light strip.**

Seamless Integration with Smart Meters

Compatible with mainstream smart meters and plug to precisely manage energy flow, enabling true zero feed-in and full energy independence.



Shelly Plus Plug
S



Shelly Pro 3EM



EcoTracker



Turn Energy into Earnings

<2 Years

Payback Period

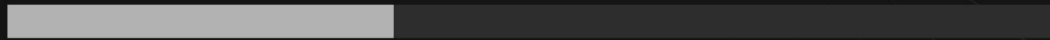
350€

Max.saving per year

Solar + HiBattery AC



Solar Only



A micro-storage system with a 1.92 kWh capacity can achieve annual savings of up to €350. This combines two modes: Self-consumption (storing excess solar energy during the day for nighttime use), contributing approximately €280 (1.92kWh x €0.40/kWh x 365 days), and TOU optimization (charging at low-tariff times and discharging during peak periods), adding around €70 (1.92 kWh x €0.12/kWh x 365 days). Total savings assume combined operation of the two.

*Actual results may vary based on usage patterns, regional tariffs, and dynamic pricing conditions.



Plug-in Microinverters





A large, 3D, glowing blue-outlined "No.1" graphic that appears to be rising from the peaks of a mountain range. The numbers are white with a bright blue glow around their edges.

Hoymiles ranked 1st globally in microinverter shipments in 2024. Except USA

*Data source: According to the latest estimates by the renowned research institution S&P Global Commodity Insights, Hoymiles accounted for 22% of the global microinverter shipments in 2024, representing a 25% year-on-year growth. Based on internal analysis of the data, Hoymiles has become the No.1 brand by market share outside the U.S., leading across regions such as Europe, Latin America, and Asia-Pacific.



HiFlow Pro Microinverter

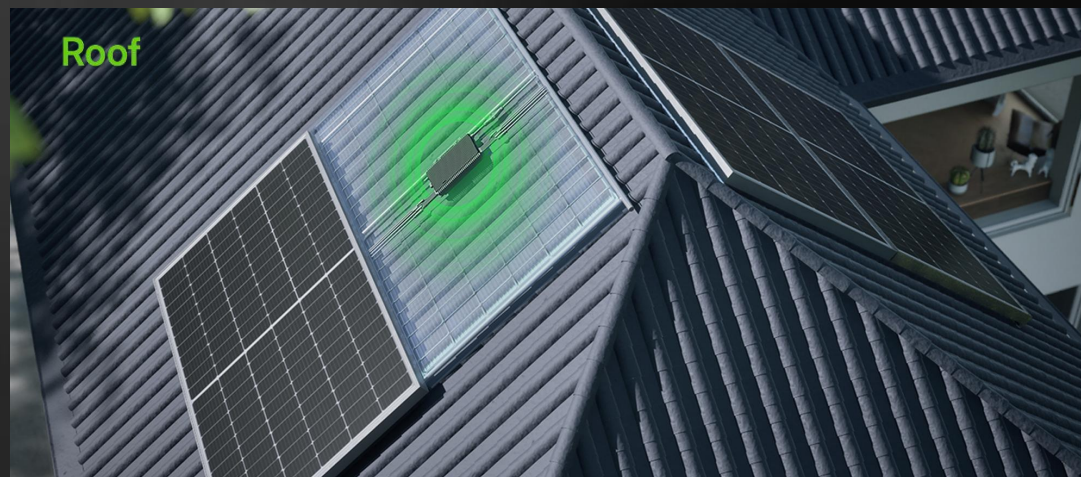
From 300 to 2000W | Plug & Play | Ultra Performance

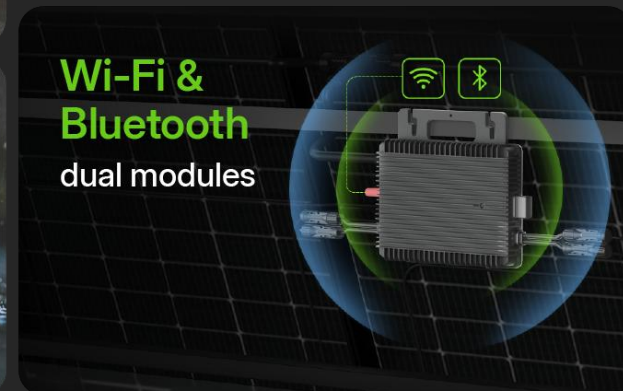
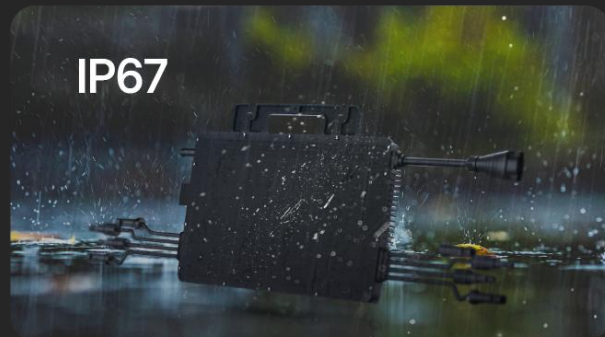




Plug & Play For All Scenarios

HiFlow Pro Series is a hyper professional microinverter lineup with independent MPPT—engineered for superior performance in complex small-scale solar installations.







Engineered for **Complex Scenarios**

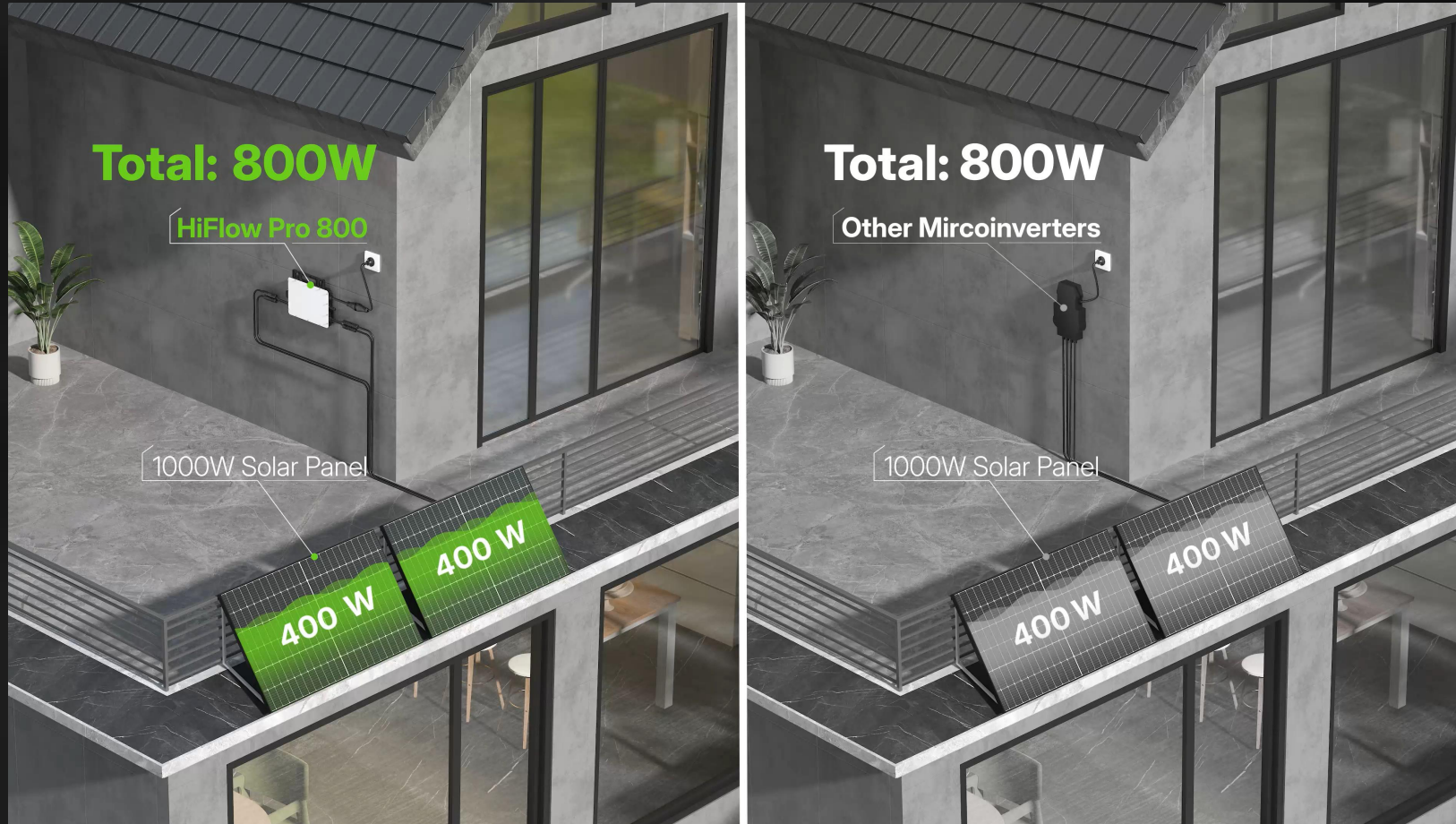


Independent MPPT ensures 99.8% static efficiency even in challenging conditions.



Dynamic Power Adjustment Increases Yield

HiFlow Pro intelligently adjusts power output under partial shading, so every module works at the optimal level, and your system generates more.





Turn Even the **Faintest Light** into Solar Harvest

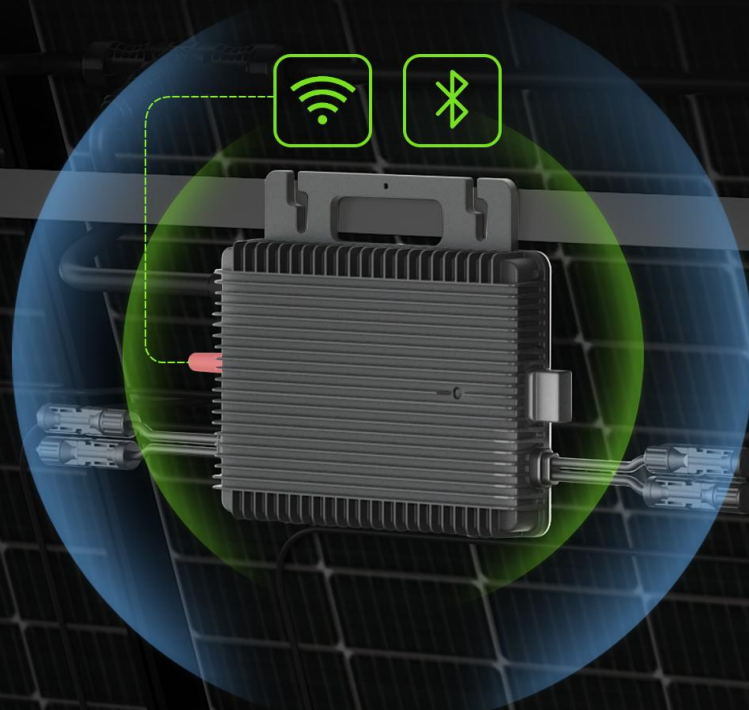
From the first morning rays to the last evening glow, HiFlow Pro microinverter, with its low startup Voltage (22V), maximizes your solar harvest—working even in dawn, dusk, or other low-light conditions.





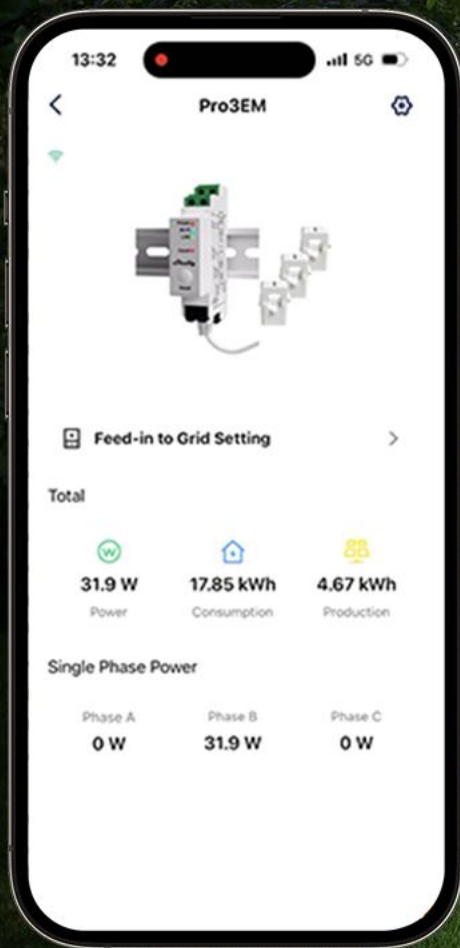
Simpler. Smarter. Faster.

Built-in dual modules enable fast pairing via Bluetooth and stable networking via Wi-Fi — all set up in **under 60 seconds**.



Precise Power Control

Supports mainstream smart meters like Shelly for accurate export management and smarter power control.



Shelly Pro 3EM



Shelly Plus Plug S



Ultimate **Safety & Reliability**



Reliable in Any Condition

With an IP67-rated rugged design, our microinverter delivers reliable performance in harsh conditions, from scorching heat to freezing cold (-40°C to +65°C), indoors or outdoors.



34V/1s Safe Cutoff

The microinverter AC plug features intelligent rapid voltage reduction, lowering voltage to safe levels ($\leq 34V$) within 1 second after disconnection. This safety mechanism complies with VDE V 0126-95:2024, effectively preventing electric shocks during installation, maintenance, and unexpected outages.



250,000+ Hours Tested

Each product undergoes over 250,000 hours of real-world continuous operation testing, nine manufacturing processes, and thousands of hours of environmental reliability tests that cover high/low temperatures, humidity, condensation, and thermal cycling. Highly Accelerated Life Testing (HALT) further ensures industry-leading durability and reliability.



Data Secured

Your data is stored locally and protected according to GDPR and EU security standards: RED-EN18031 to ensure safe and reliable transmission.



Annual Yield: €274

Calculation Method:

Annual Savings (€) = Annual PV Generation × Self-consumption Rate × Electricity Price

PV Generation Estimate: 4698 kWh/year (based on southern Germany data from PVGIS)

Self-consumption Rate: 40%

Electricity Price: €0.40/kWh

Example:

$1714.77 \text{ kWh} \times 40\% \times €0.40 \approx €274/\text{year}$

Compared to a typical 1600 W balcony PV system (1355 kWh/year → ~€217/year)

Note:

Actual savings depend on installation location, orientation, consumption patterns, and system settings.



HiFlow 800

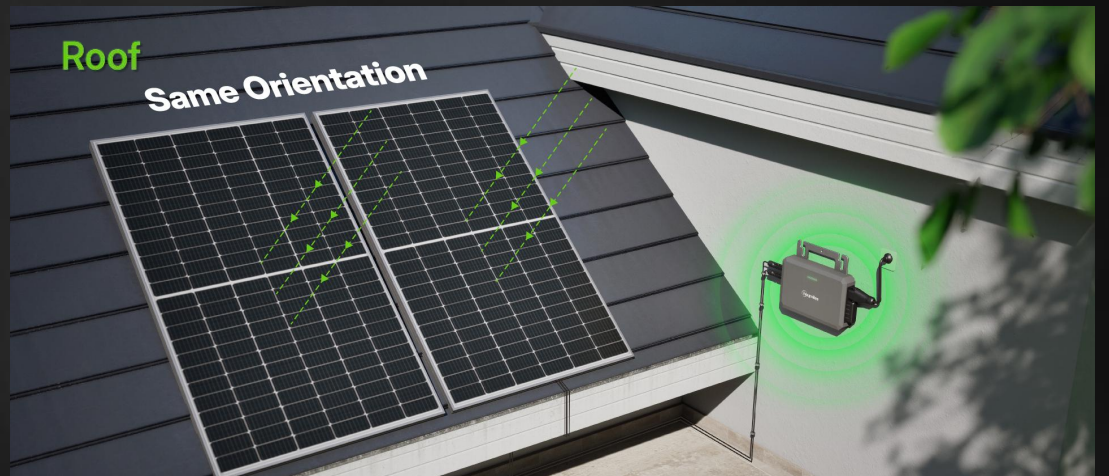
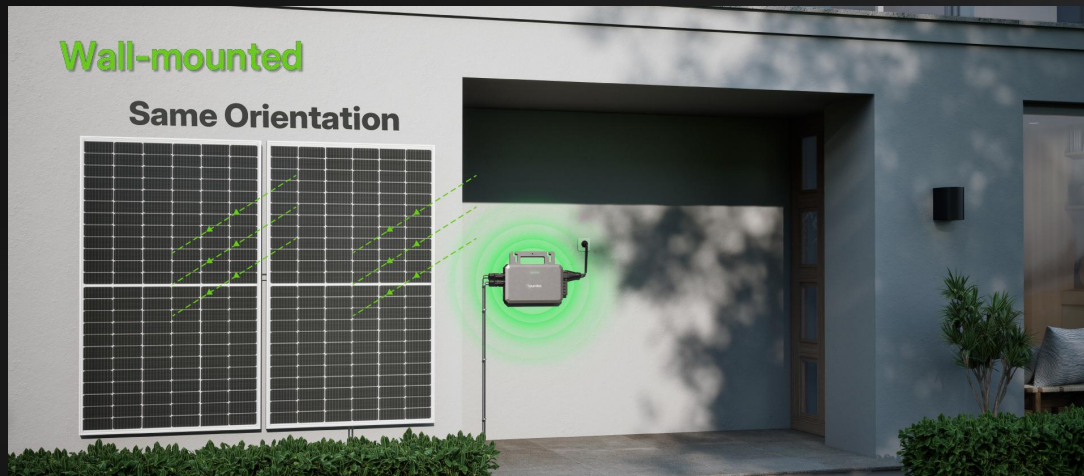
Tailored for two panels with same orientation





Best Fit for Two Panels with Same Orientation

HiFlow promises top-level performance at a budget-friendly price. Compact, efficient, and easy to install, it's built to deliver more for less.





Annual Savings

€143



Zero Export
with Smart Meters



Lower Startup
Voltage



HiFlow | 800W

High efficiency & Cost-effectiveness



Wi-Fi &
Bluetooth
dual modules



Plug & Play



97%

Peak Efficiency



12-Year Warranty
+ IP67

12
year

Unrivaled Efficiency, Maximum Power

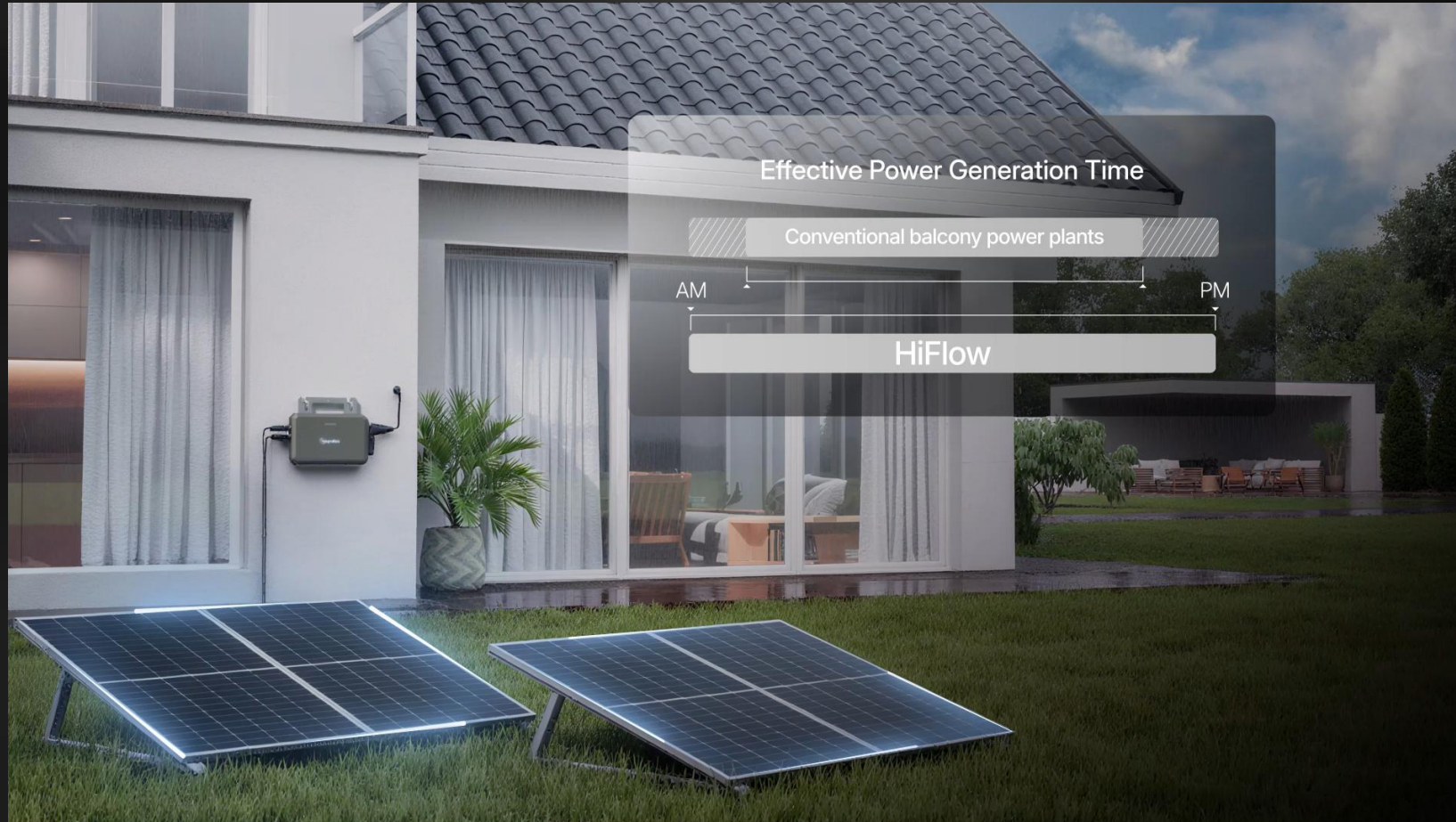


97% peak efficiency transforms sunlight into real power and real value.



Turn Even the **Faintest Light** into Solar Harvest

From the first morning rays to the last evening glow, HiFlow microinverter, with its low startup Voltage (22V), maximizes your solar harvest—working even in dawn, dusk, or other low-light conditions.





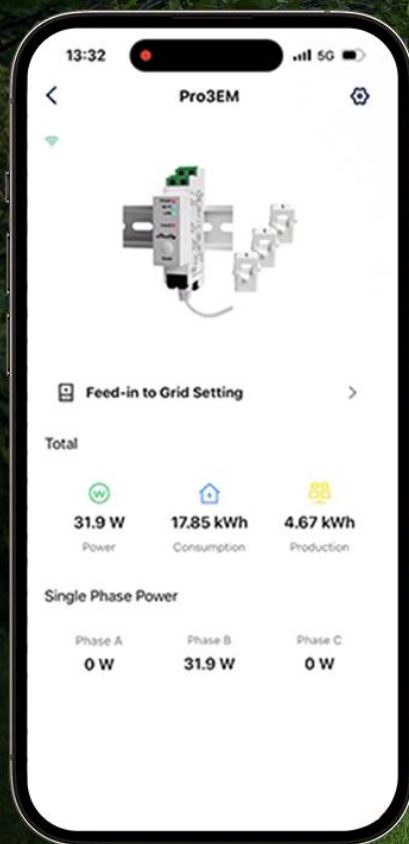
Simpler. Smarter. Faster.

Built-in dual modules enable fast pairing via Bluetooth and stable networking via Wi-Fi — all set up in **under 60 seconds**.



Precise Power Control

Supports mainstream smart meters like Shelly for accurate export management and smarter power control.



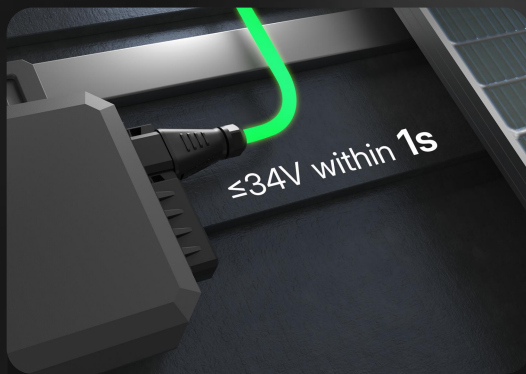


Ultimate **Safety & Reliability**



Reliable in Any Condition

With an IP67-rated rugged design, our microinverter delivers reliable performance in harsh conditions, from scorching heat to freezing cold (-40°C to +65°C), indoors or outdoors.



34V/1s Safe Cutoff

The microinverter AC plug features intelligent rapid voltage reduction, lowering voltage to safe levels ($\leq 34V$) within 1 second after disconnection. This safety mechanism complies with VDE V 0126-95:2024, effectively preventing electric shocks during installation, maintenance, and unexpected outages.




250,000+ Hours Tested

Each product undergoes over 250,000 hours of real-world continuous operation testing, nine manufacturing processes, and thousands of hours of environmental reliability tests that cover high/low temperatures, humidity, condensation, and thermal cycling. Highly Accelerated Life Testing (HALT) further ensures industry-leading durability and reliability.



Data Secured

Your data is stored locally and protected according to GDPR and EU security standards: RED-EN18031 to ensure safe and reliable transmission.



Annual Savings: **€143**

Calculation Method:

Annual Savings (€) = Annual PV Generation × Self-consumption Rate × Electricity Price

PV Generation Estimate: 858 kWh/year (based on southern Germany data from PVGIS)

Self-consumption Rate: 40% Electricity Price: €0.40/kWh

Example:

$896 \text{ kWh} \times 40\% \times €0.40 \approx €143/\text{year}$







Compared with a typical 800W balcony PV system
(715 kWh/year → ~€114/year)

Note:

Actual savings depend on installation location, orientation, consumption patterns, and system settings.



Which Microinverter is **Right for You?**

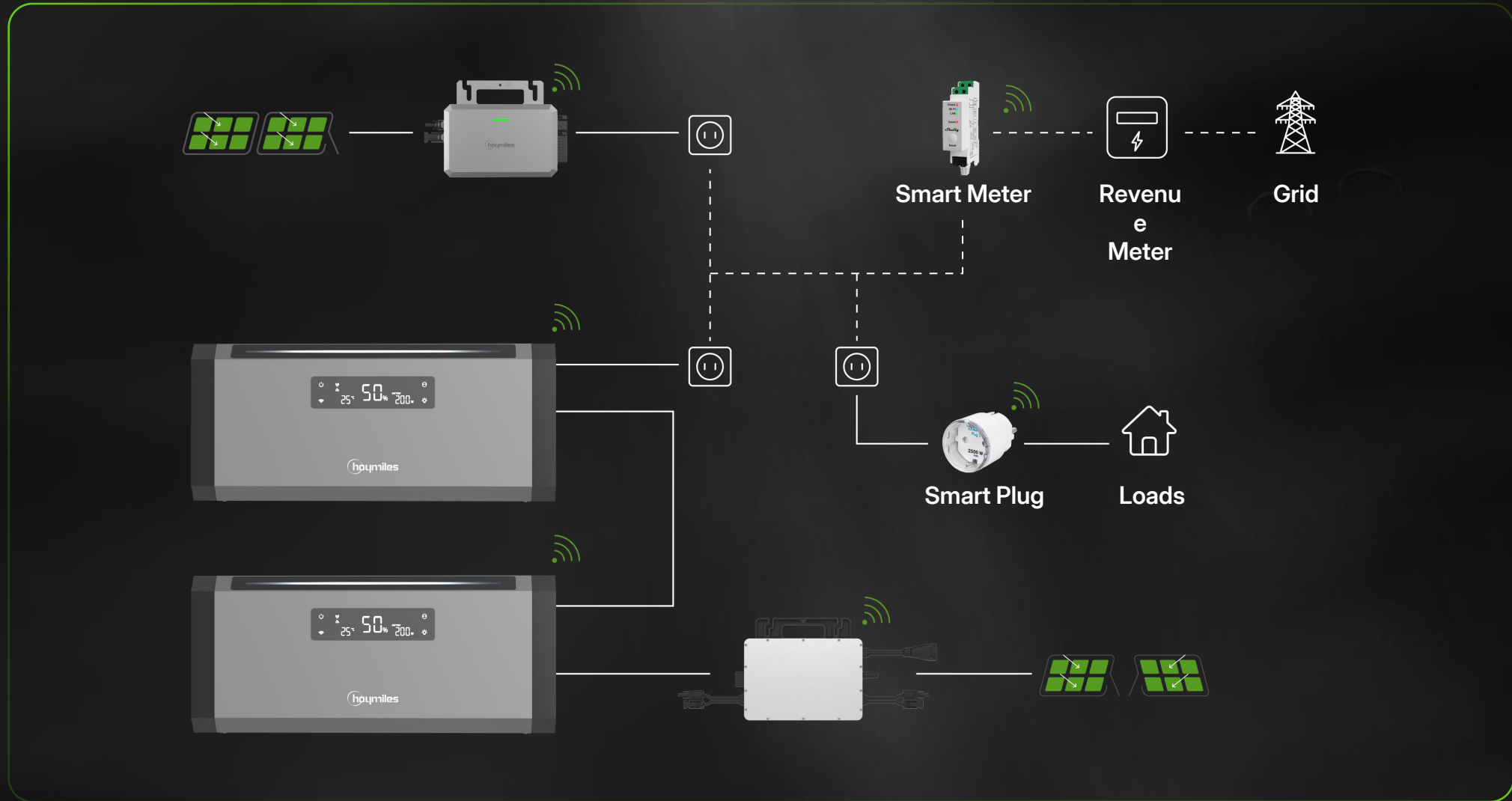
| Hoy miles Plug-in Microinverters | Super Ultra Performance | Ultra Performance | High Efficiency & Cost-Effectiveness |
|-------------------------------------|--|---|---|
| |  HiFlow 1600 Pro |  HiFlow 800 Pro |  HiFlow 800 |
| Commonly Used Module Numbers | 4 | 2 | 2 |
| Module Orientation |  Supports modules with different orientations |  Supports modules with different orientations |  Modules/Panels with same orientation |
| Size & Weight | Medium 331 × 218 × 40.6 mm/ 5.6 kg | Medium 261 × 180 × 35.1 mm/ 3.2 kg | Small 213 × 182.5 × 36.6 mm/ 2.1 kg |
| Estimated Annual Energy Yield (kWh) | 2000-2500 | 800-1000 | 800-1000 |
| Installation Location | <div><div>✔ Balcony</div><div>✔ Incined roof</div><div>✔ Flat roof</div><div>✔ Straight wall</div><div>✔ Garden</div><div>✔ Carport</div></div> <p>To maximize module power generation, avoid shading as much as possible during installation.</p> | | |

Hoymiles Plug-in Ecosystem

HiFlow/HiFlow Pro and HiBattery AC can be fully integrated into a single system, controlling power locally and ensuring reliable export management.



Installation & Wiring Layout





Open Energy for All

